

Handwritten musical score for the first system. The vocal line is in G major, 4/4 time. The piano accompaniment is in G major, 4/4 time. The piano part includes chord diagrams above the staff.

А взо-мі кві-туть ма-ки крм

Handwritten musical score for the second system. The vocal line is in G major, 4/4 time. The piano accompaniment is in G major, 4/4 time. The piano part includes chord diagrams above the staff.

ва-вни не мев-тати ули-рши. Каз сн-тати ро-мо-сн-б

Handwritten musical score for the third system. The vocal line is in G major, 4/4 time. The piano accompaniment is in G major, 4/4 time. The piano part includes chord diagrams above the staff.

а-ти мисл'и-и ми-ке карди-риси: «са-

Handwritten musical notation for the first system. It consists of three staves. The top staff is a vocal line with lyrics: "а-ти мисл'и-и ми-ке карди-риси: «са-". The middle and bottom staves are piano accompaniment, showing chords and rhythmic patterns.

о-рок мисл'и-и не на-ми-це не при-

Handwritten musical notation for the second system. It consists of three staves. The top staff is a vocal line with lyrics: "о-рок мисл'и-и не на-ми-це не при-". The middle and bottom staves are piano accompaniment, showing chords and rhythmic patterns.

ми-не" ро-ко-силь-туче-но ма-ри, а

Handwritten musical notation for the third system. It consists of three staves. The top staff is a vocal line with lyrics: "ми-не" ро-ко-силь-туче-но ма-ри, а". The middle and bottom staves are piano accompaniment, showing chords and rhythmic patterns.

Handwritten musical score for the first system. The vocal line is in G major (one sharp) and 4/4 time. The lyrics are "зо-ки кли-чуть ма-ма." The piano accompaniment consists of chords in the right hand and a bass line in the left hand. The system concludes with a fermata over the final note.

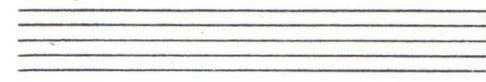
Handwritten musical score for the second system. The vocal line continues with the lyrics "ре-а". The piano accompaniment features a more active bass line with eighth notes and chords. The system ends with a fermata.

Handwritten musical score for the third system. The vocal line includes the lyrics "зо-ки кли-чуть ма-ма Ве-ли-чези и се-". The piano accompaniment is more complex, featuring triplets and sixteenth notes in both hands. The system concludes with a fermata.

li ke - lov bi'guseu - km - ua - ti' moob

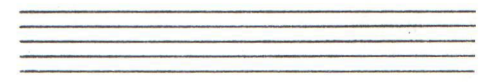
ka - po - me y zar - pa - ti. Ki - de si kor - do - ta

ua 3 por no - bu de se - komu kra - to de -



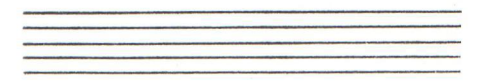
Handwritten musical notation for the first system. It features a vocal line in treble clef with a key signature of one flat and a 3/4 time signature. The lyrics are "Наш не прѣдѣ Силѣ".

Handwritten musical notation for the piano accompaniment of the first system, including both treble and bass clefs.



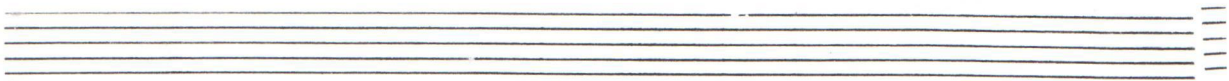
Handwritten musical notation for the second system. It features a vocal line in treble clef with a key signature of one flat and a 3/4 time signature. The lyrics are "Крикъ чей мо-мѣ-те мѣ-те".

Handwritten musical notation for the piano accompaniment of the second system, including both treble and bass clefs.

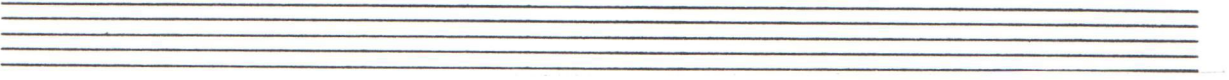


Handwritten musical notation for the third system. It features a vocal line in treble clef with a key signature of one flat and a 3/4 time signature. The lyrics are "Богъ мѣ-те насъ. А".

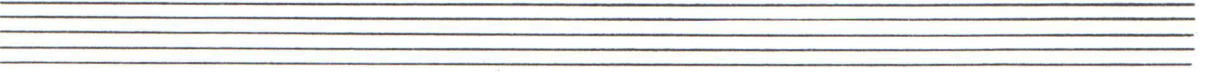
Handwritten musical notation for the piano accompaniment of the third system, including both treble and bass clefs.



Handwritten musical score for the first system. It consists of a vocal line and a piano accompaniment. The vocal line has lyrics: "де-ку коро од-лучаго, на-бѣ се-ри де мрѣ и". The piano part features chords and arpeggiated figures.



Handwritten musical score for the second system. The vocal line has lyrics: "га-го, Бѣга Нб — до, Крик — ти". The piano accompaniment continues with complex chordal textures.



Handwritten musical score for the third system. The vocal line has lyrics: "Гои крик го-и-и аме го ке да". The piano part includes a 3/4 time signature and various chordal structures.